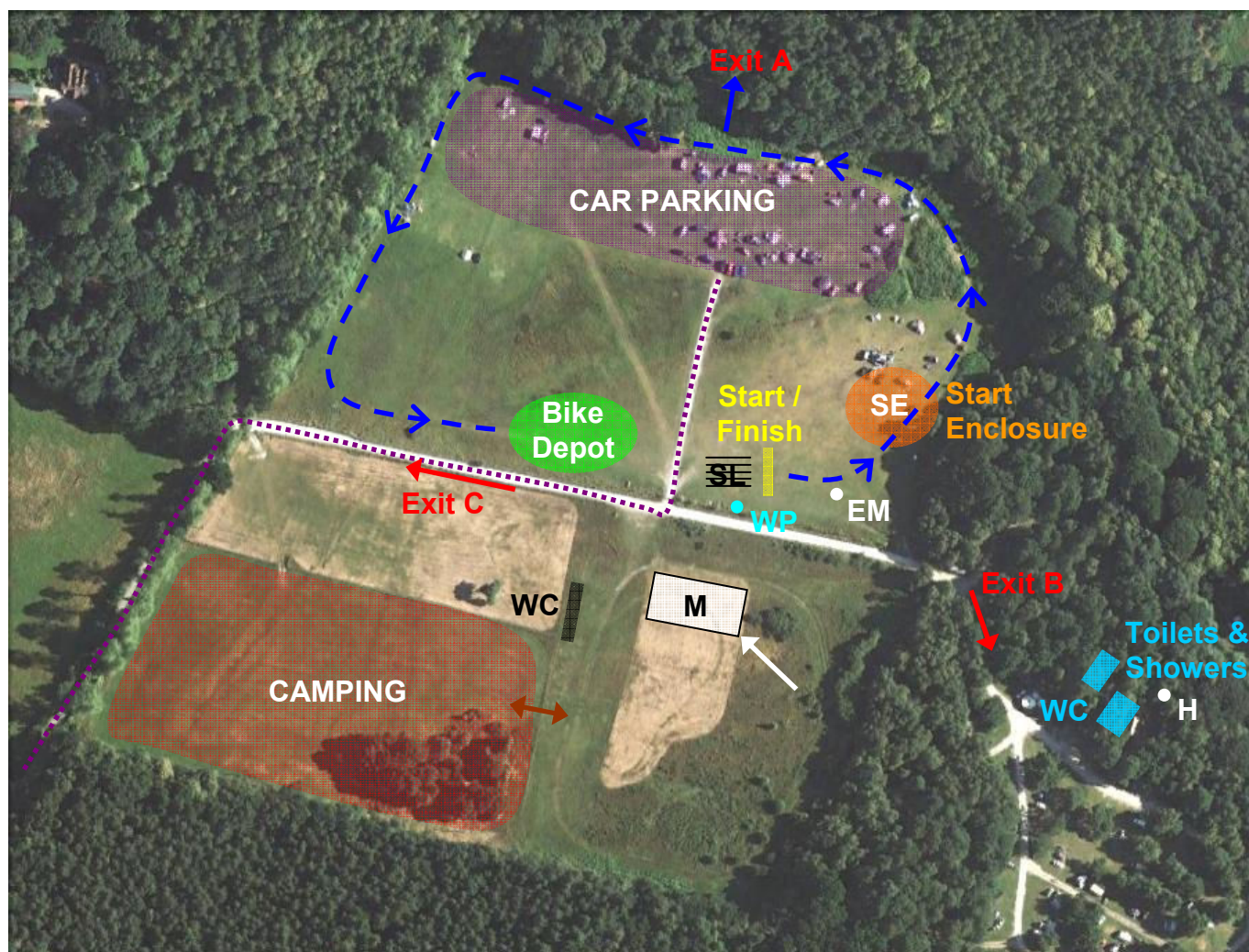


Q2 The Quest Challenge: 24-25 April 2010

Burnbake, Rempstone, Corfe Castle, BH20 5JH

This is for your advance information. Key locations will be further explained at the Event Briefing.



KEY

- Way in and out for vehicles
- - - Start lap – run around the edge of the field going around markers in field corners
- ➔ Exit A – foot only (no bikes – riding or pushing)
- ➔ Exit B & C – on bike or on foot
- ↔ Entrance gate to camping area
- M..... Marquee; for Registration, Enquiries, Quest Kitchen & Event Briefing
- WP..... Water Point (drinking water tap)
- WC..... Portaloo's / Toilets
- SL..... Start Lanes (1 person from each team lines up here with race number & EMIT card)
- SE..... Start Enclosure (other team members start from here)
- EM..... Extra Map Collection Point (please have race number clearly visible)
- H..... Hose for cleaning bikes