

Aerial photo of event base for Wiltshire Downs questars on 18 July 2009

St. Francis School, Marlborough Road, Wiltshire, SN9 5NT

Note: this has been put together for your information. If not everything makes sense at this moment please do not contact us with your questions – all will be explained at the race briefing and there will be plenty of time to ask any questions you still have after this. In the unlikely event that some things end up being in a different location to where they are provisionally marked below then these changes will be announced at the race briefing.

1. START / FINISH

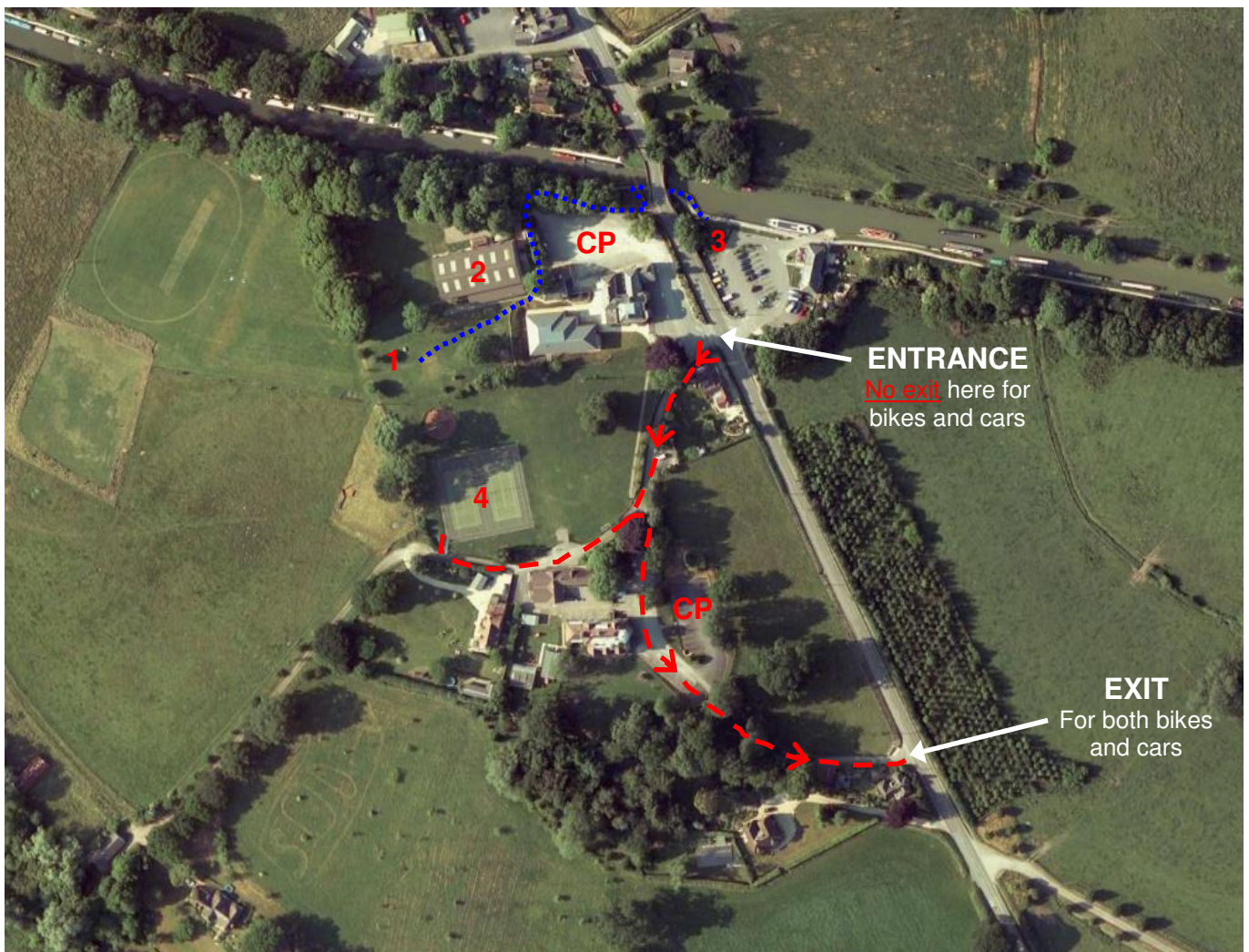
No bikes at the start / finish. Bikes must be left at the bike transition and you must make your way on foot to / from the start / finish

2. EVENT BASE

Collect race packs, briefing, toilets, showers, hand in score card after finish & prize giving all in the sports hall here.

3. KAYAK TRANSITION

No bikes allowed here. Bikes must be left at the bike transition and you must make your way on foot to / from the kayak transition on the canal towpath under road bridge.



KEY



Route to kayak transition.
By foot only – no bikes.
Go under road bridge on canal towpath.



Route to / from bike transition with arrows showing direction of travel.
You must obey the one way system.
No riding of bikes on the grass at any time.

4. BIKE TRANSITION

Leave bikes and kit boxes in tennis courts

CP. CAR PARKING

Follow marshal's directions